

A stylized, light blue map of a city grid with a winding river or canal. The map is composed of thin lines representing streets and water bodies, with some areas shaded in a slightly darker blue.

GEOSATIS

Company & Solutions

GEOSATIS

GEOSATIS is the world's leading maker of end-to-end electronic monitoring and predictive analytics solutions for the criminal justice system. The company was founded in 2011 as a spin-off from the renowned technical university of EPFL in Lausanne, Switzerland – and has been focused ever since at revolutionizing the electronic monitoring industry.



Our mission

WE CONTRIBUTE TO A MORE HUMANE AND SAFER SOCIETY

GEOSATIS offers a secure, reliable, convenient and cost-effective electronic monitoring solution for enhanced public safety and successful offender rehabilitation - using Swiss precision, quality and innovation.

Our vision

NO MORE PRISON OVERCROWDING, NOR RECIDIVISM

GEOSATIS proposes a viable and cost-effective alternative to imprisonment which can help cut prison overcrowding and reduce recidivism. Our solution allows offenders to maintain a professional activity, take care of their family, and make a positive contribution to society.



Our values

HUMANISM, RESPECT, PASSION, INNOVATION AND EXCELLENCE

At GEOSATIS, we believe in the power of people and technology. Our corporate values drive us to optimally address the challenges faced by the criminal justice sector, through in-depth understanding of customer's needs and breakthrough innovations that challenge the status quo and deliver radically better products and services.

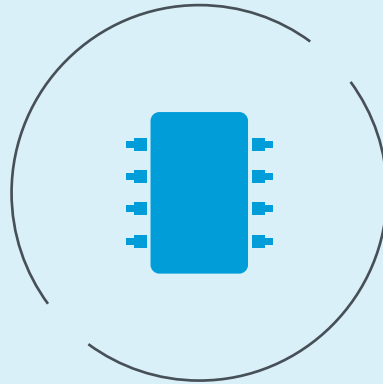


COMPLETE SOLUTION PROVIDER

As a complete solution provider, GEOSATIS offers a **unique range of expertise** at every stage from product innovation and design all the way to customer solutions implementation and support. With headquarters based in the Jura watch valley, GEOSATIS and its partners make the best use of **Swiss know-how** in micro-mechanics and wearable devices.



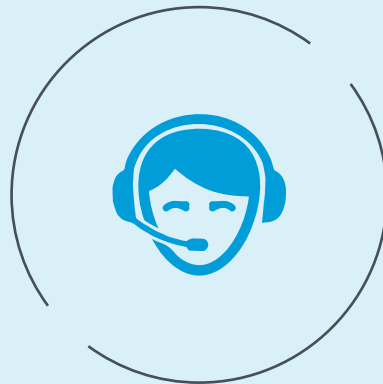
Mechanical and ergonomic design



Embedded software engineering



Web & app software development



Customer service & support

FULL-RANGE OFFERING

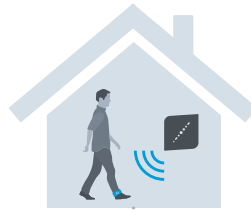
Location tracking

Using the satellite positioning capabilities of our GPS/RF one-piece bracelet



Home curfew

Using the bracelet in conjunction with our indoor beacon



Victim protection

Using the bracelet in conjunction with our victim protection device



Management & supervision

Monitoring multiple offenders, defining restrictions, managing alarms - using any device from the GEOSATIS solution



Serving all use cases for the criminal justice system

Pre trial



- Preventive
- Bail

Prison



- Indoor tracking
- Transfers
- Temporary leave

Probation



- Location tracking
- Home curfew
- Victim protection

LOCATION TRACKING

The GEOSATIS electronic bracelet is the most secure, reliable and convenient **GPS/RF one-piece** ankle bracelet on the market - combining a unique, robust and easy to use **toroidal shape** design with state-of-the-art secure and precise geo-localization technologies.



HYBRID ANKLE BRACELET



Multiple GNSS support

GPS, Galiléo, Glonass, BeiDou



Opening / Closing

Quick, easy and secure



Covid-19 compliant

No physical contact

GEOSATIS has improved the functionalities of its bracelet with a higher level of **encryption** and the inclusion of a **dual SIM-card** slot to maximize mobile networks connectivity.

Thanks to a sophisticated **multi-sensor tampering detection**, any attempts to open or damage the bracelet are detected and reported immediately to the monitoring center, while its superior engineering decreases false tamper nuisance.

MOBILE CHARGER



Freedom of movement

Wireless charger



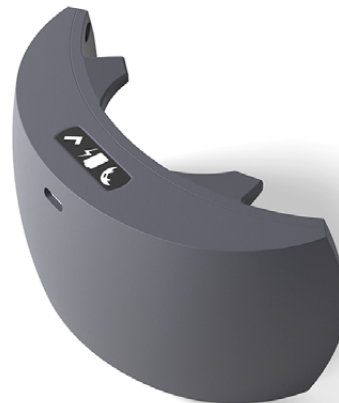
LCD Screen

Display of remaining charging time



Water resistant

IP 68 - not charging



HOME CURFEW

The GEOSATIS beacon offers the functionality to locate an offender **indoors** using a **radio frequency** link to connect to the electronic ankle bracelet.



Indoor location



Motion detection sensors

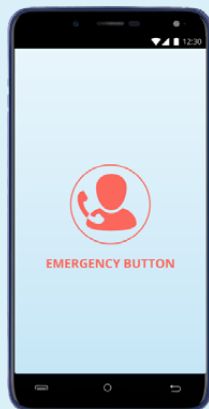


2 years battery life



VICTIM PROTECTION

The electronic monitoring solution for domestic violence is a sophisticated **proximity notification system** used to protect victims. The GEOSATIS victim application allows the victim to move freely in the community with an established mobile proximity zone that works in conjunction with the GEOSATIS GPS bracelet worn by the offender. In the event the offender enters this mobile proximity zone, the system automatically triggers an alarm in the monitoring software and the victim is notified.



Proximity detection mobile zone

Paired with the bracelet of the offender



Emergency button

Triggers an alarm in case of insecurity



Automatic recording

Pictures/sounds that can be used as an evidence in court

MANAGEMENT AND SURVEILLANCE

The GEOSATIS **monitoring software** is a web-based application that allows the management and supervision of offenders during the entire rehabilitation process.



Set up Inclusion / exclusion zones



Receive and deal with alarms



Generate detailed reports



Define curfew constraints



Create offender profiles



Assign devices



Replay traces

The screenshot displays the GEOSATIS monitoring software interface. The top section shows the 'Offenders' profile for Jonathan Douglas, including his current bracelet condition (37% battery) and a list of devices (BRACELET (L) D25L1G3K | V6). Below this, there are tabs for 'Details', 'Settings', 'Installation', 'Last charging', and 'Actions'. The 'Details' tab is active, showing activation date, main part firmware, auxiliary part, and auxiliary part firmware. The 'Settings' tab shows communication settings, GPS position, and trigger settings. The 'Installation' tab shows installation status, date, and communication control. The 'Last charging' tab shows battery level, last full recharge, and mobile charger. The 'Actions' tab has buttons for 'Trigger bracelet signal', 'Open bracelet', and 'Close the bracelet'. Below the offender details, there is a calendar view for April 2020, showing curfew constraints for each day. The bottom section shows a map with a trace of the offender's location, with a list of alarms triggered within the selected time frame on the left.

Alarms triggered within the selected time frame

Alarm	Time	Status
Battery Low	2:58 PM	March 16, 2020
Communication Loss	8:07 PM	March 4, 2020
Localization Loss	8:04 PM	March 4, 2020
Localization Loss	4:36 PM	March 2, 2020
Bracelet Tampering	1:03 PM	March 2, 2020

This single software solution lets the supervisor configure and oversee multiple offenders using any devices from the GEOSATIS product's portfolio (the electronic ankle bracelet, beacon and victim protection device).

GEO SATIS

securing people

Headquarters

Rue Saint-Hubert 7

2340 Le Noirmont

SWITZERLAND

Tel: +41 32 552 04 80

Fax: +41 32 552 04 81

Research Center

EPFL Innovation Park, building D

1015 Lausanne

SWITZERLAND

US Head Office

800 E. Diehl Road, Suite 160

Naperville, IL 60563

USA

Tel: +1 312 213 21 26

www.geo-satis.com



swiss precision